

DO-IT-YOURSELF WEATHERIZATION

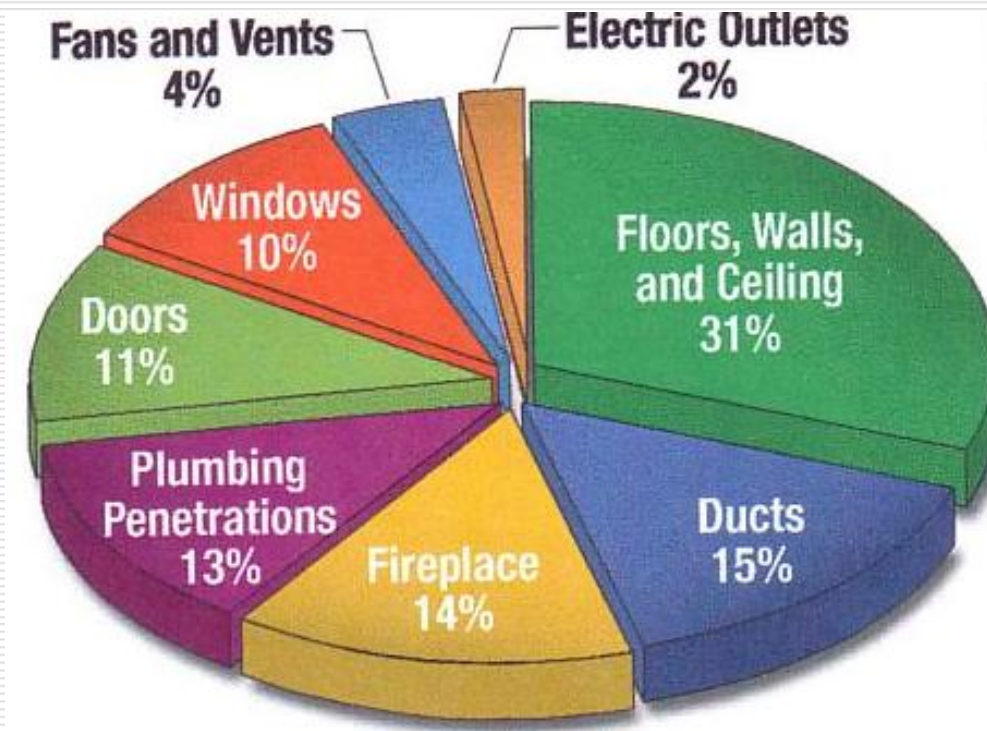
Northside Association for Community
Development
Old House Network

October 30, 2012

DO-IT-YOURSELF

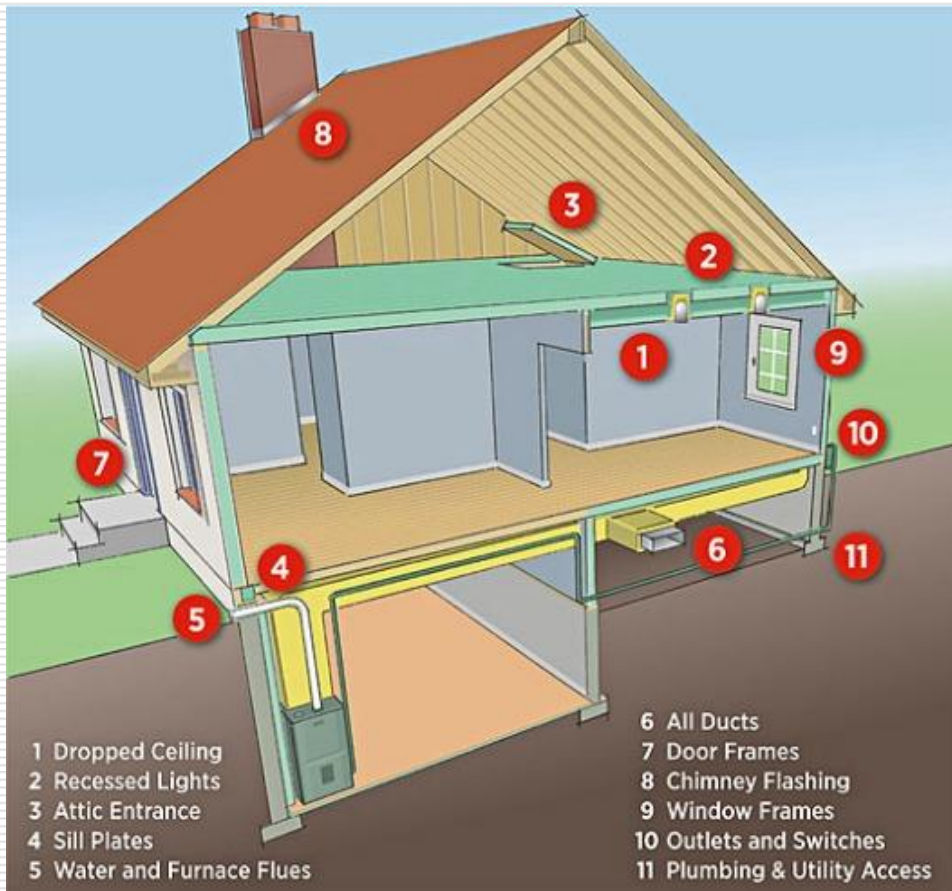
- ❑ Simple things you can do to SAVE ENERGY and \$\$\$\$\$\$\$
 - ❑ Everywhere – plug holes and gaps
 - ❑ BASEMENT – keep heat IN ducts & pipes, sill plate insulation
 - ❑ Doors – sweeps & weather stripping
 - ❑ Windows – weather stripping, caulks, plastic interior – CURTAINS & BLINDS
-

Warm air escapes – cold air gets in



- Warm air rises
 - Cold air sinks
 - Nature seeks a balance
 - Warm to cool
-

Where are the leaks?



- AT NIGHT – look from outside for light leaking out
- Get a friend with a flashlight to help from inside

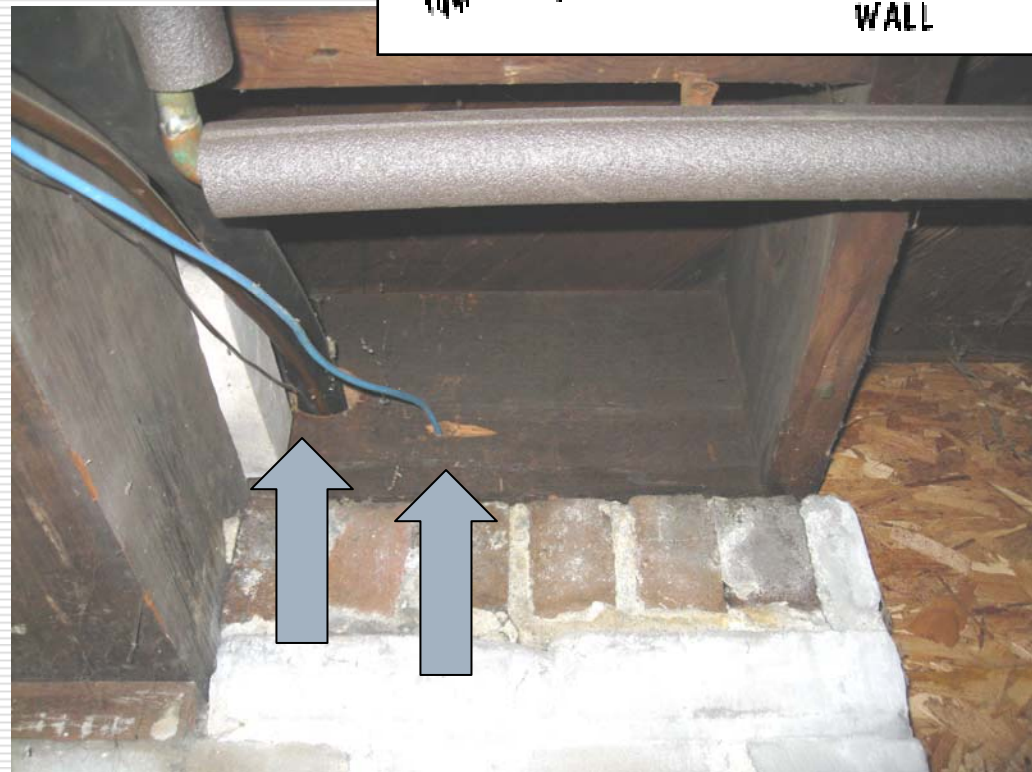
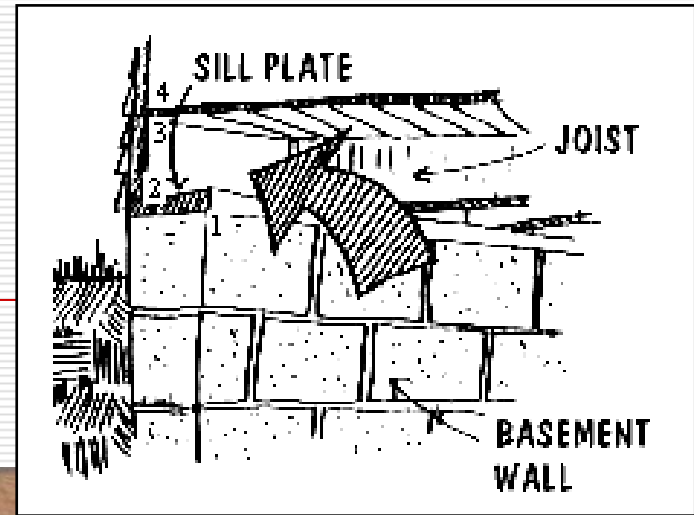
Basement - UNFINISHED

- Keep the heat inside the furnace ducts
- Keep the hot water hot!

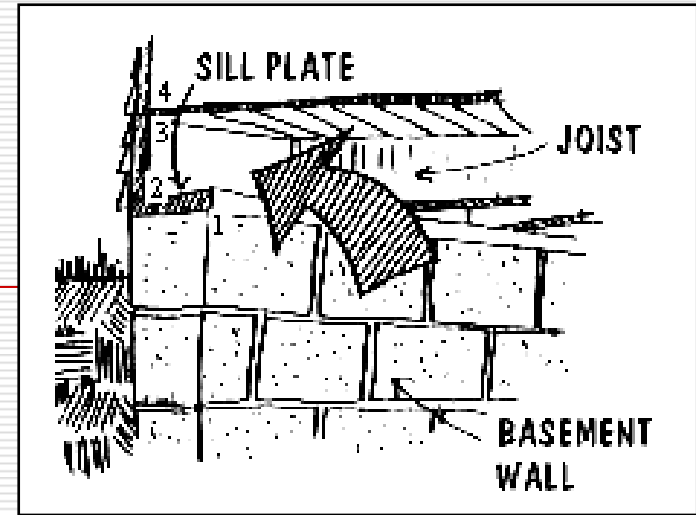


Sill Plate, rim joist

- Fill gaps around wires and other penetrations



Sill Plate, rim joist ADD INSULATION



❑ OLD ^ ^ ^

❑ NEW >>>>>>>>>>



FURNACE & DUCTS

Heated air leaks from joints

Cover gaps with silver DUCT
Tape



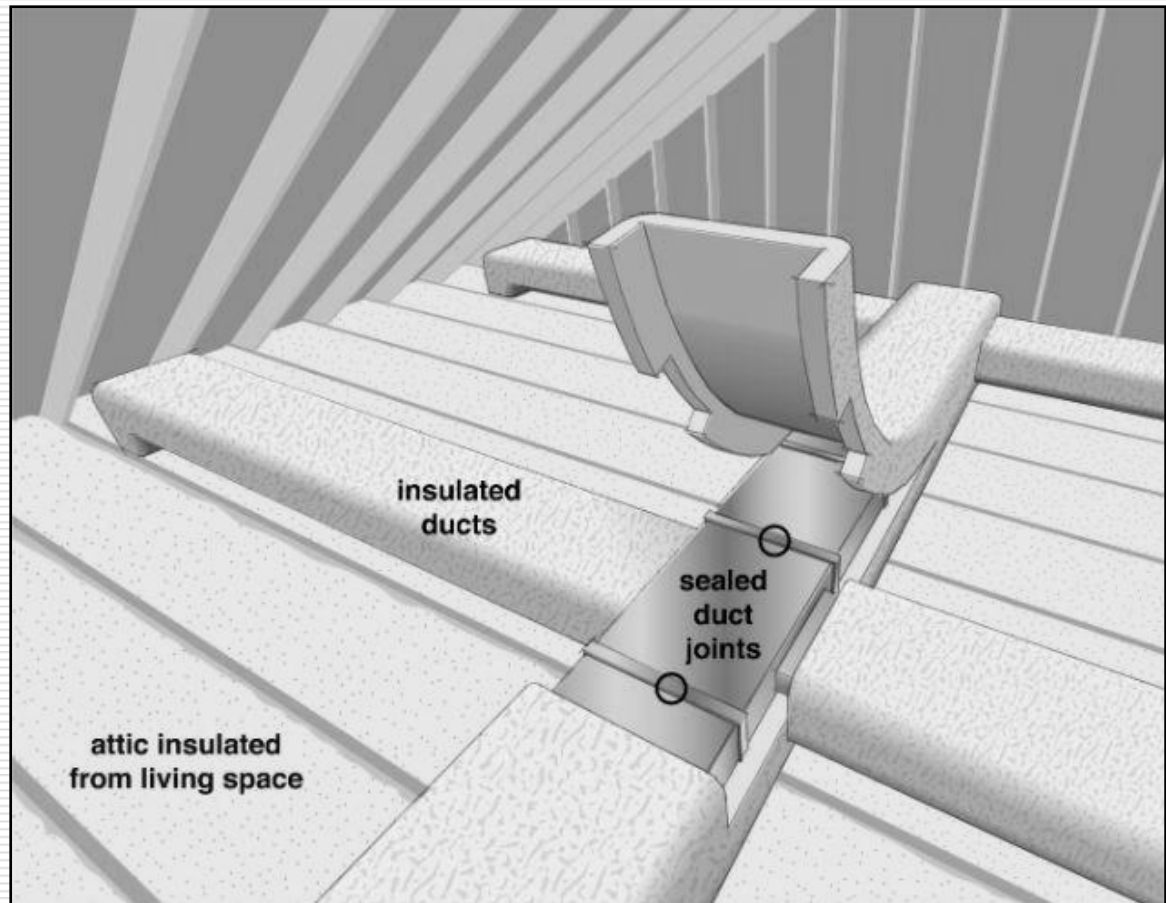
DO NOT USE *DUCK* TAPE

Does NOT last



DUCT WRAP

Insulate the ducts – send the heat upstairs not to the basement

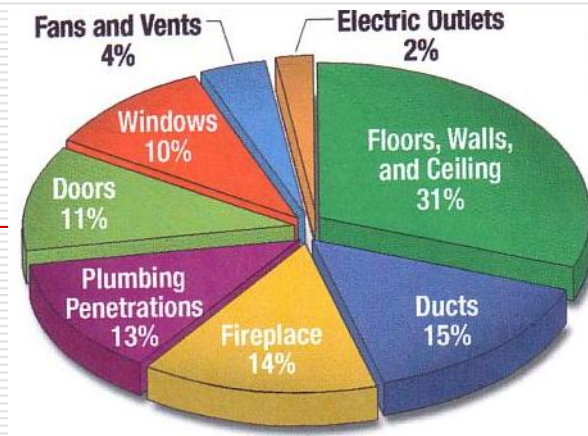


PIPE WRAP

- Keep heat in the hot water pipes



Fireplaces



- Fireplaces account for 14% of heat loss according to the Department of Energy
 - Close damper
 - If you do not use the fireplace, consider a cover for the opening
-

INSIDE – where does it feel cool?

- ❑ Around windows
- ❑ Convection
 - Warm air on one side of the glass
 - Cool air on the other
 - Nature seeks a balance
- ❑ Around penetrations like power outlets and switches



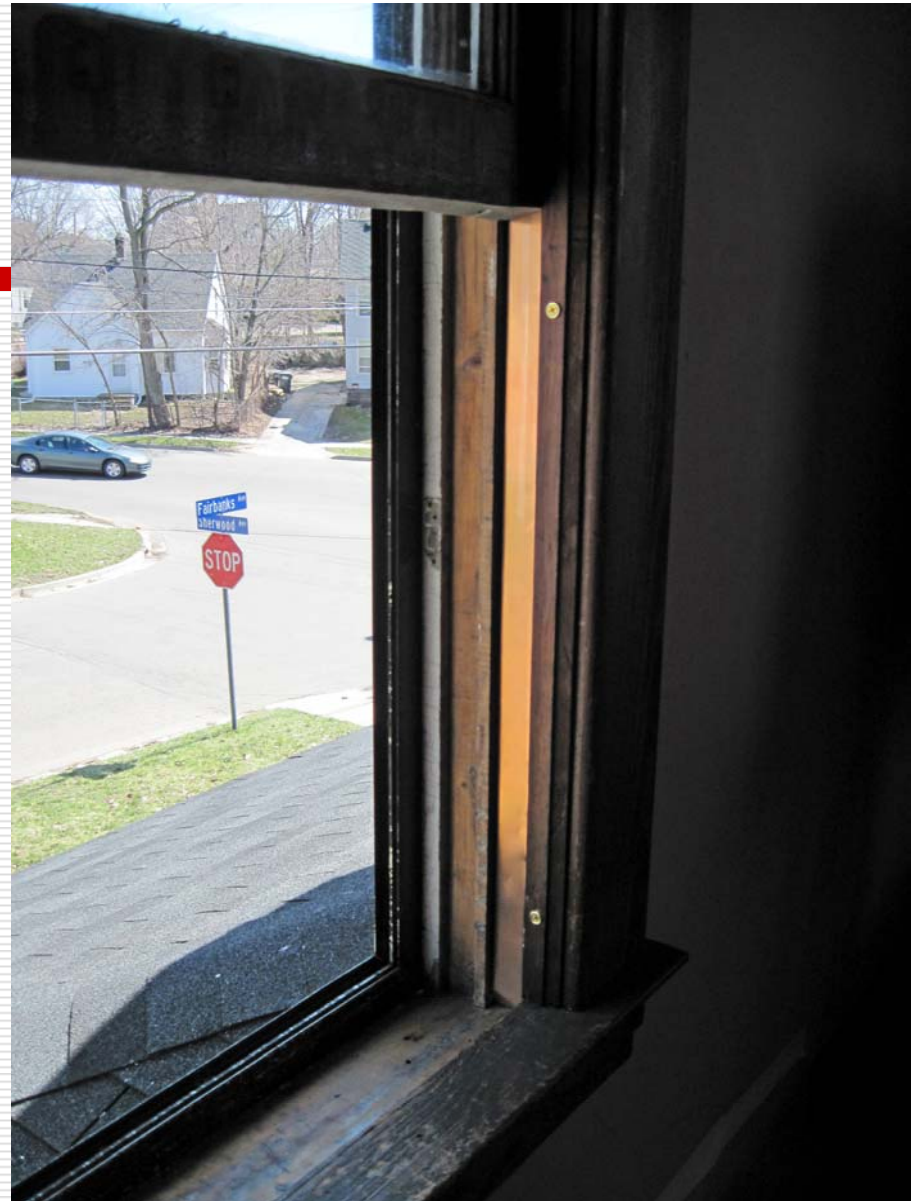
DRAFTY WINDOWS??

- ❑ CONVECTION – as the temperature changes from warm to cool, the air inside creates a draft near the window
- ❑ AIR LEAKS
 - Storm closed?
 - Window locked?

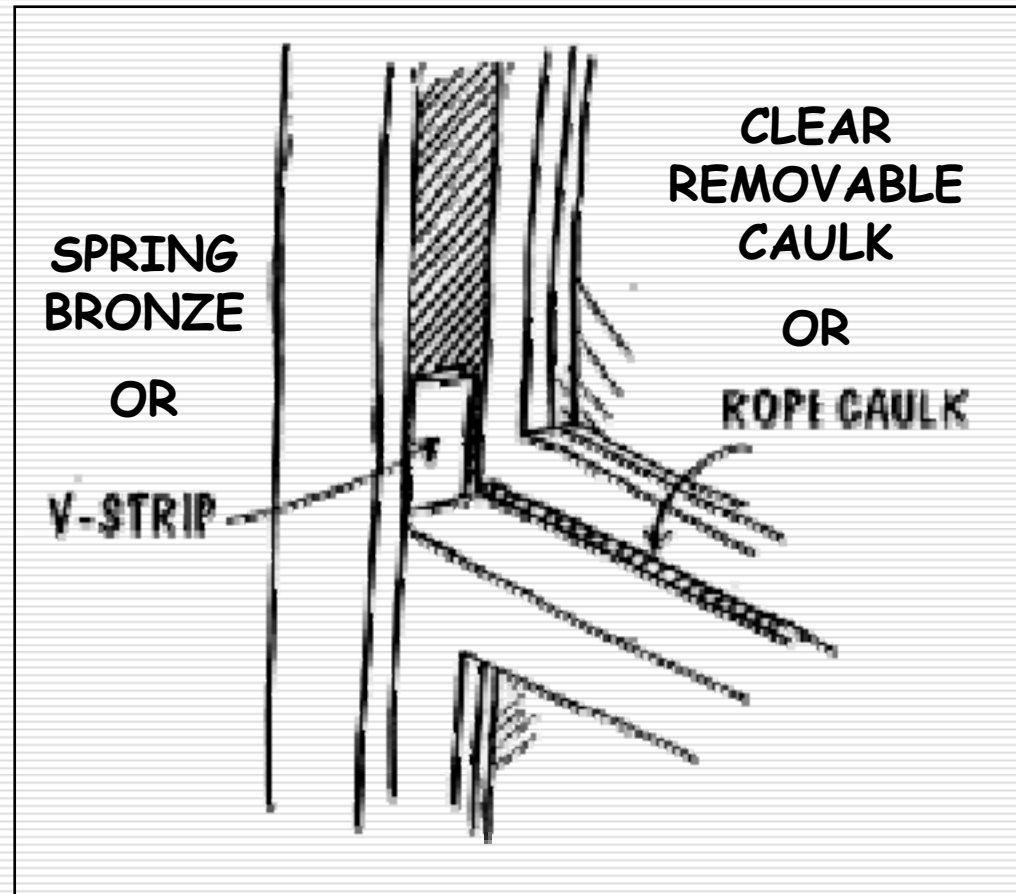


Window Weather strip

- ❑ In the sash channel
- ❑ Metal (spring bronze) lasts up to 75 years
- ❑ Vinyl V-channel – breaks down and need to be reinstalled.



Fill the gaps around the moving parts of the window



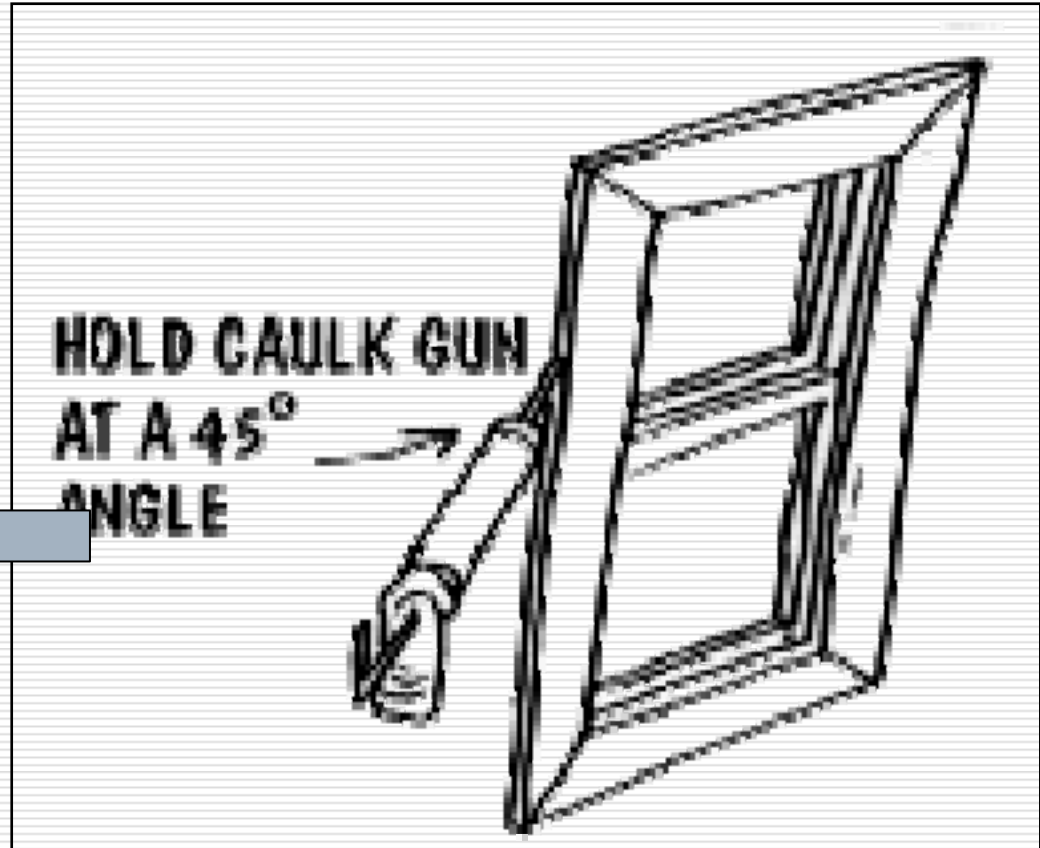
Fill the gaps around the inside of the window

Gaps between wall and edge of window casing (frame)

Fill with caulk or spackle



Fill gaps around the outside of the window - fill with paintable caulk



Insulation in the attic

- Look from outside once snow starts

